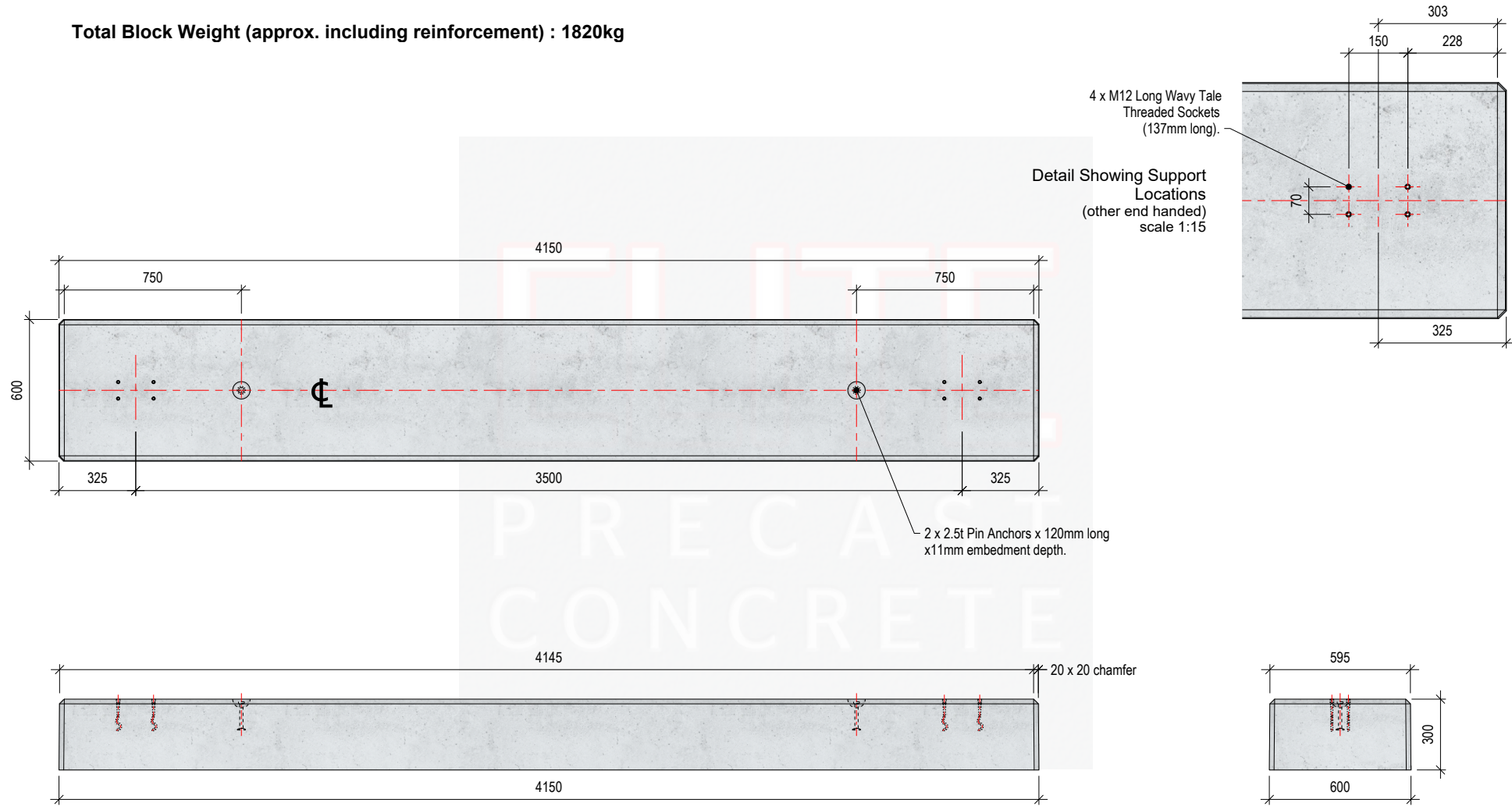

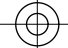
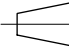


Total Block Weight (approx. including reinforcement) : 1820kg



All Concrete Solar Blocks are manufactured using high strength (50N/mm²) concrete and are Class A1 fire resistant in accordance with clause 4.3.4.4 of EN 13369

					TITLE	ELITE PRECAST CONCRETE LTD UNIT O, HALESFIELD 9 TELFORD TF7 4QW														
					Solar Block 4150mm x 600mm x 300mm	Tel : 01952 588885 www.eliteprecast.co.uk email : sales@eliteprecast.co.uk														
A	26-03-26	M12 Socket Connection change.	CTC	-																
O	03-03-26	First Issue.	CTC	-																
REV	DATE	REASON FOR ISSUE	DRN	APP			DRN	CTC	CHKD	-	DATE	03-03-26	SIZE	A4	SCALE	1:25	DRG	Solar4150600300	REV	A