



NON-DRILL

Rapid Post System



NON-DRILL Rapid Post System

Introduction:

The Non-Drill Rapid Post System utilises the Euro Accessories Pin Anchor lifting system as a ready-made fixing point for fencing, handrails and signposts. The Non-Drill post engages with the head of the Pin Anchor system and is simply rotated until the plate on the Non-Drill post tightens against the concrete surface. There is no drilling, digging or bolting required to install the posts. The Non-Drill system comes in three formats to engage with either the 2.5 tonne, 5.0 tonne or 10 tonne Pin Anchors. The Non-Drill system is suitable for either permanent or temporary applications and can be removed without damaging or marking the concrete.

Patent Pending: PCT/AU2014/050396





NON-DRILL Rapid Post System



*Above images courtesy of Telford City Council



NON-DRILL Rapid Post System

Advantages:

Using the Non-Drill Rapid Post System alleviates the need to use percussion drilling equipment to place fixings for fencing and signpost placement. This has several key advantages:

- There is no risk of damaging or striking the reinforcement steel within the structure.
- Drilling can potentially cause localised spalling, which in turn can lead to exposure of the reinforcement steel to the atmosphere, leading to accelerated corrosion and either cosmetic or structural damage to the concrete.
- The risk from hand, eye and ear injury is reduced significantly.
- Noise and dust pollution are eliminated entirely from the post installation procedure.

As the Pin Anchors are generally placed in the units at production stage the system also provides further advantages when erecting fencing systems and placing signage:

- The Post placement positions are always in the correct position, reducing the risk of setting out errors when measuring post centres.
- The quality of the fixing is guaranteed.
- There is no spoil to remove from site.
- The placement centres are uniform so fencing components can be cut off site.
- Minimises the need for plant on site.
- Ideal for areas where power and access may be an issue.
- In temporary applications the system can be removed leaving no trace of any surface damage or fixings, other than the galvanised lifting pin, which can easily be grouted over.







NON-DRILL Rapid Post System

Uses:

The Non-Drill System is suitable for permanent or temporary use in the following applications:

- Parapet fencing on earth retaining walls or structures.
- Parapet fencing on box culvert drainage systems.
- Fence posts for both chain-link and welded mesh fencing systems.
- Pedestrian barriers.
- Sign post placement.
- Traffic warning signage on permanent and temporary central reservation barriers.
- Additional fencing on interlocking concrete barrier systems.

Standard Specifications:

Tube Dia:	48.3mm
Wall Thickness:	3.2mm
Tube Length:	1100mm
Load Rating:	350Nm ⁻¹ with post heights up to 1200mm
Finish:	Hot Dip Galvanised

*Other sizes available

Engineer Certification:

Non-Drill Engineers certifications available on request.

Patent Pending: PCT/AU2014/050396





NON-DRILL Rapid Post System

Installation:

Installation guide available on request.

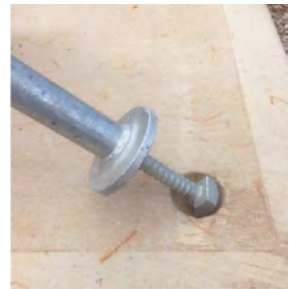
Step 1

Unscrew clutch to approx. 120mm.



Step 2

Hold post at an angle to connect clutch to the Pin Anchor.



Step 3

Move post to upright position.

Tip. If connecting to a circular recess, on occasion the post may keep turning. A simple way to avoid this is to place a piece of 10mm aggregate under the head of the Pin Anchor.



Step 4

Tighten post clockwise by hand for temporary handrails.

Use a stilson wrench on the bottom of the post for additional tightening if required.



Branches:

Euro Accessories Ltd (Head Office)
Units 1 - 3 Shannon Industrial Estate
Lodge Road
Sandbach
Cheshire
CW11 3HP
t. 0044 12709020
f. 0044 845 052 6575
e.info@euroacc.co.uk

Euro Accessories Ltd (Southern)
Unit 3, Stewart Road
Kingsland Business Park
Basingstoke
Hampshire
RG24 8NF
t. 0044 118 981 9522
f. 0044 118 981 9017
e.info@euroacc.co.uk

Euro Accessories Ltd (Ireland)
Strokestown Road
Roosky
Co. Roscommon
N41 XW59
Rep. of Ireland
t. 00353 71 9638 796
e.sales@euroacc.ie



Euro Accessories Product Range:

Plastic, Concrete & Wire Spacers
Slab Accessories
Magnet Systems
Cast-in Channel
Precast Accessories
Screed Rails

Reinforcement Continuity Systems
Formwork Systems & Accessories
Piling Accessories
Lifting & Fixing Systems
Double Walling Accessories
Chemicals & Sprayers