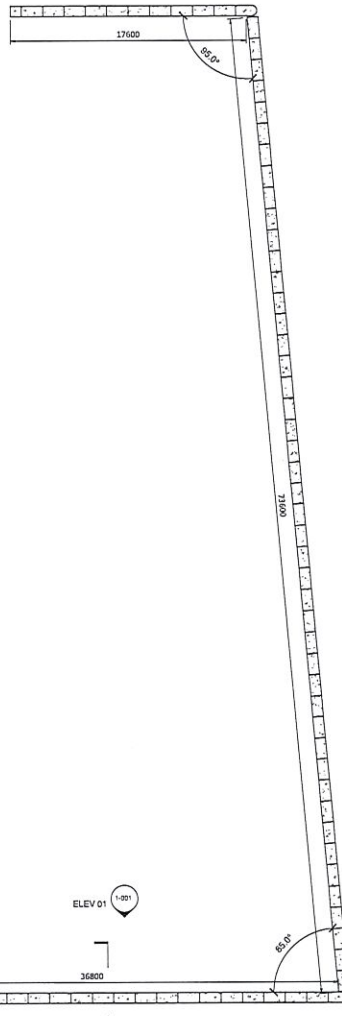
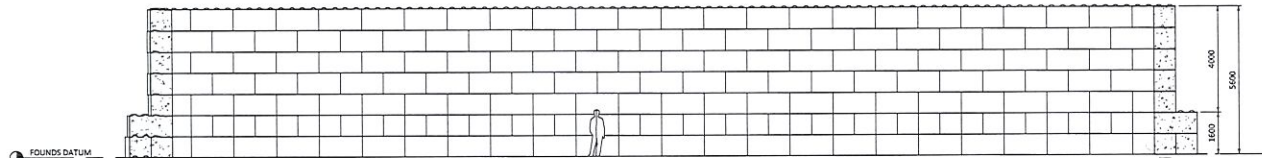


TYPICAL LEGATO BLOCK G.A. ROWS 1 & 2
1:200



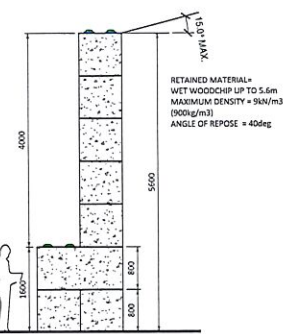
TYPICAL LEGATO BLOCK G.A. ROWS 3-7
1:200



TYPICAL ELEVATION 01
1:100

NOTE
IT IS UP TO THE CLIENT TO ADVISE
IF THESE PARAMETERS CANNOT
BE MET.

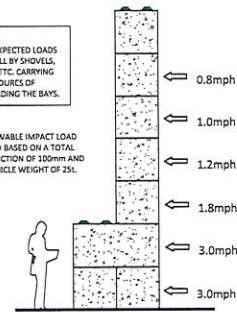
NOTE
WALL HAS NOT BEEN DESIGNED FOR
RETAINED MATERIAL TO BE
COMPACTED BY VEHICLE DRIVING
OVER OR ON TOP OF THE RETAINED
MATERIAL.



TYPICAL SECTION
1:50

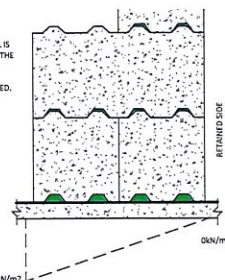
NOTE
IMPACT LOADS ARE EXPECTED LOADS
IMPOSED ON THE WALL BY SHOVELS,
BACKHOES, BUCKETS ETC. CARRYING
OUT NORMAL PROCEDURES OF
LOADING AND UNLOADING THE BAYS.

ALLOWABLE IMPACT LOAD
SPEED BASED ON A TOTAL
DEFLECTION OF 100mm AND
A VEHICLE WEIGHT OF 25t.

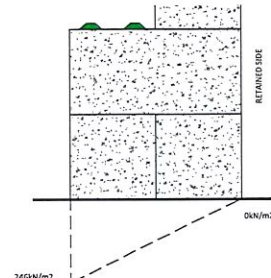


ALLOWABLE IMPACT LOADS
1:50

NOTE
THE BEARING PRESSURE BENEATH THE WALL IS
SHOWN. IT IS UP TO THE CLIENT TO ENSURE THE
GROUND IS ADEQUATE. ALTERNATIVELY A
FOUNDATION MAY BE DESIGNED TO SUIT
ALLOWABLE GROUND PRESSURES IF REQUIRED.



BEARING PRESSURE BENEATH 150mm SLAB
1:25



BEARING PRESSURE DIRECTLY BENEATH WALL
1:25

NOTES

1. Contractor to check all dimensions and levels, and report any errors or omissions to the engineer. All design, materials, construction and workmanship to be in accordance with the requirements of the appropriate British Standards / European Codes, or Codes of Practice unless varied by the specification drawings.
2. This drawing to be read in conjunction with all relevant Architects, Engineers and Specialists drawings together with the specification.
3. All dimensions and levels not shown, to be taken from relevant Architects details.
4. All indicated dimensions between or to existing elements to be checked on site before fabrication.
5. Drawing is not to be scaled physically or electronically, if in doubt ask.
6. All dimensions in millimetres except levels which are in metres.

TOTAL BLOCK SCHEDULE				
Type Mark	Type	Count	Volume	Weight (t)
LG4-800	LG4 800x800x800	8	4.30 m ³	9.3304
LG8-600	LG8 1600x800x800	864	184.26 m ³	2074.2144
LG-BENDI	LG BENDI BLOCK	10	10.34 m ³	24.576
Grand total: 862		862	878.59 m ³	2106.6208

Rev	Description	Date	By	Check
-----	-------------	------	----	-------



STRUCTURAL ENGINEERING CONSULTANTS
8 The Grove, Hallatrow, Bristol, BS39 6ES
Tel: 0127 270297 Email: mail@clp-structures.co.uk
Registered UIC Company No. 8929503



Holefield 9, Telford, Shropshire TF7 4DW5
Tel: 01952 588885 Fax: 01952 582011
Email: sales@eliteprecast.co.uk

Project: EGGER TIMBERPAK WOODCHIP BAY

Title: LEGATO BLOCK GENERAL ARRANGEMENT DETAILS

PROJECT STATUS INFORMATION			
Original Scale (PAS)	Drawn	Checked	Rev
A4	NML	CEL	
Indicated	Date 23.09.15		
Project Number	Drawing Number		
CLP075	1-001		