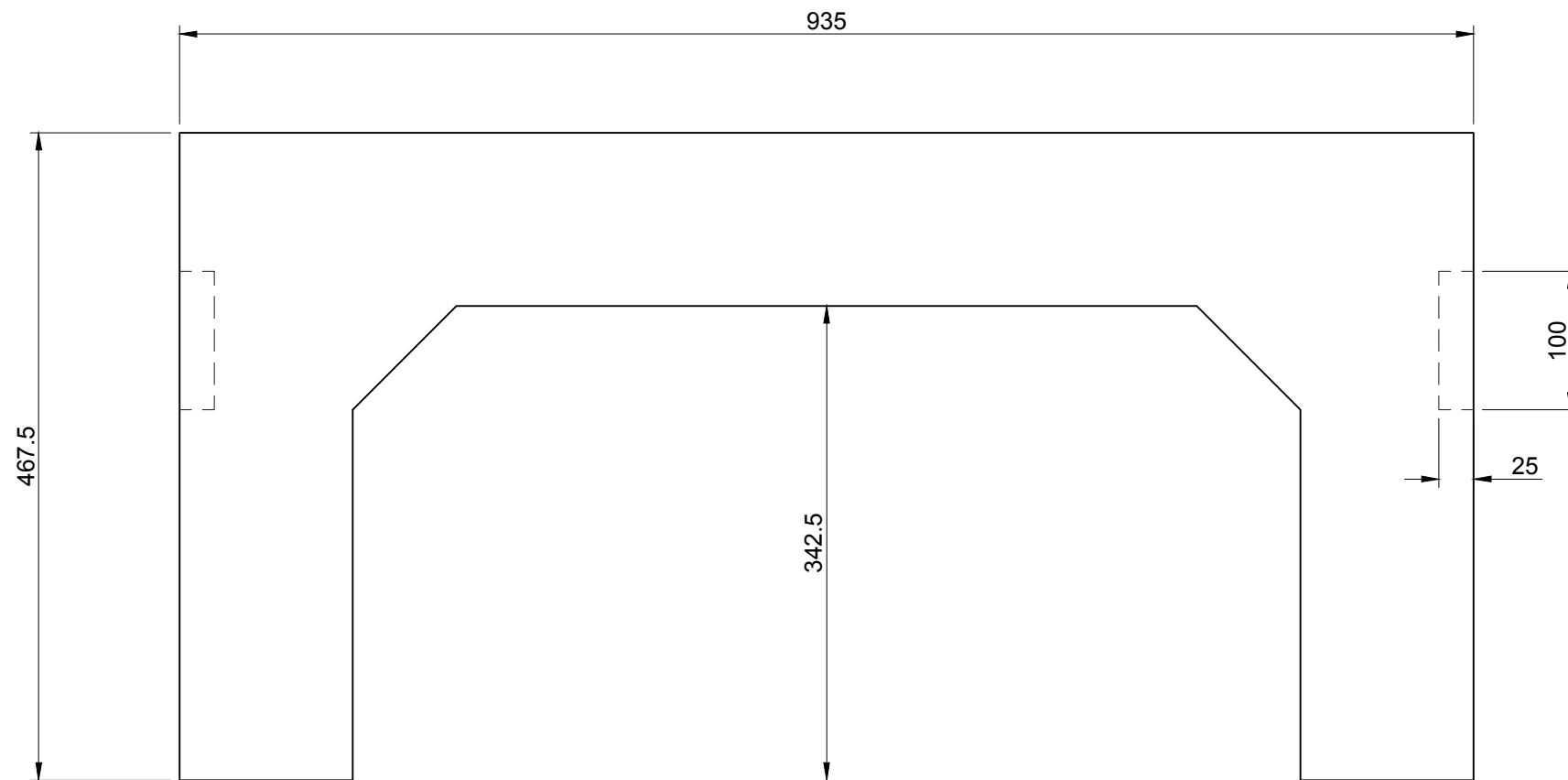
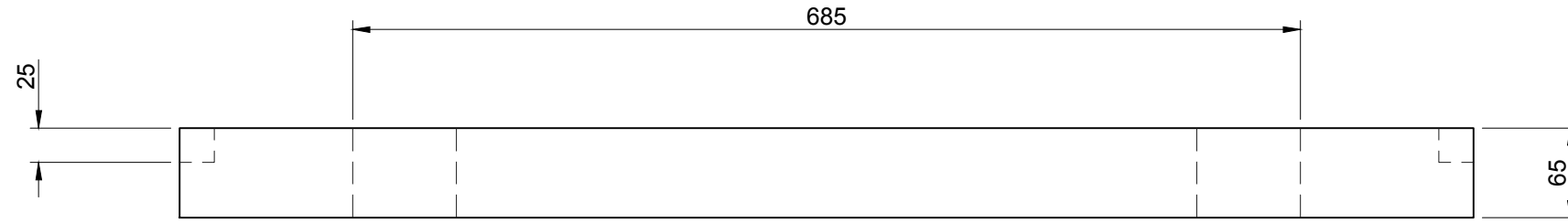
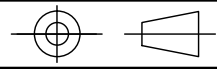


PROJECTION

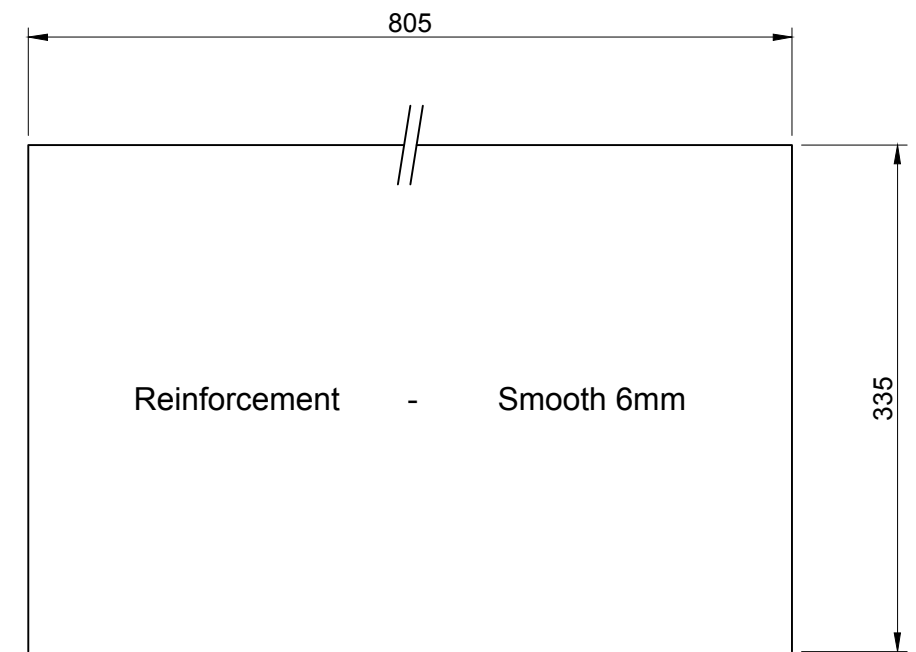


Notes

Tolerances to BS EN 1917 & BS 5911 part 3

Minimum cover = 25mm

Weight = 28 Kg



Reinforcement shall comply with the requirements of BS 4449-2005. Minimum yield strength 500MPa & BS4482

| | | | | | A | 06.03.14 | Weight Added & Title Block Updated. | CTC | RD | | | | |
|-------------------------------------|------|------------------|-----|--------|--------------------------------|------------|-------------------------------------|---------|-----|-----|-----|-----|---|
| | | | | | O | 08.03.10 | For Information | CTC | RD | | | | |
| REV | DATE | REASON FOR ISSUE | DRN | APP | REV | DATE | REASON FOR ISSUE | DRN | APP | | | | |
| TITLE : | | | | | ELITE PRECAST CONCRETE LIMITED | | | | | | | | |
| 2 Part Seating Ring Adjustment Unit | | | | | HALESFIELD 9, TELFORD | | | | | | | | |
| Square 675 | | | | | SHROPSHIRE TF7 4QW | | | | | | | | |
| Elite Product Code : - | | | | | | | | | | | | | |
| DRN : | CTC | CHKD : | RD | DATE : | 08-03-10 | DRG SIZE : | A3 | SCALE : | 1:5 | DRG | 012 | REV | A |