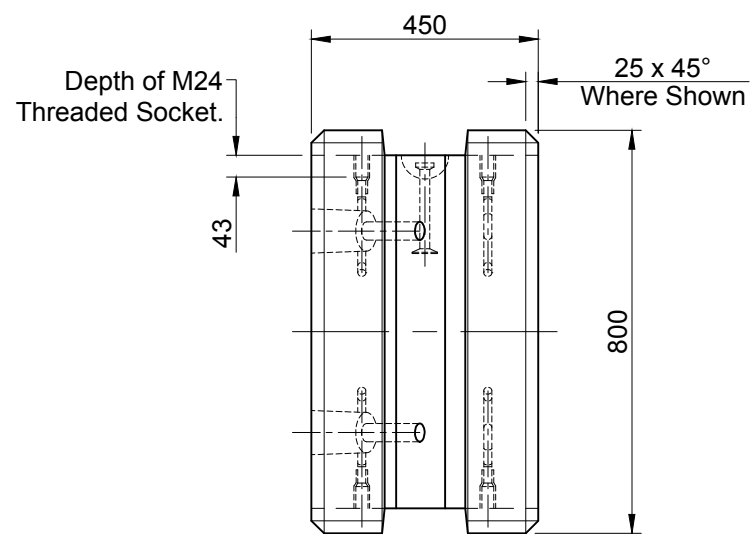
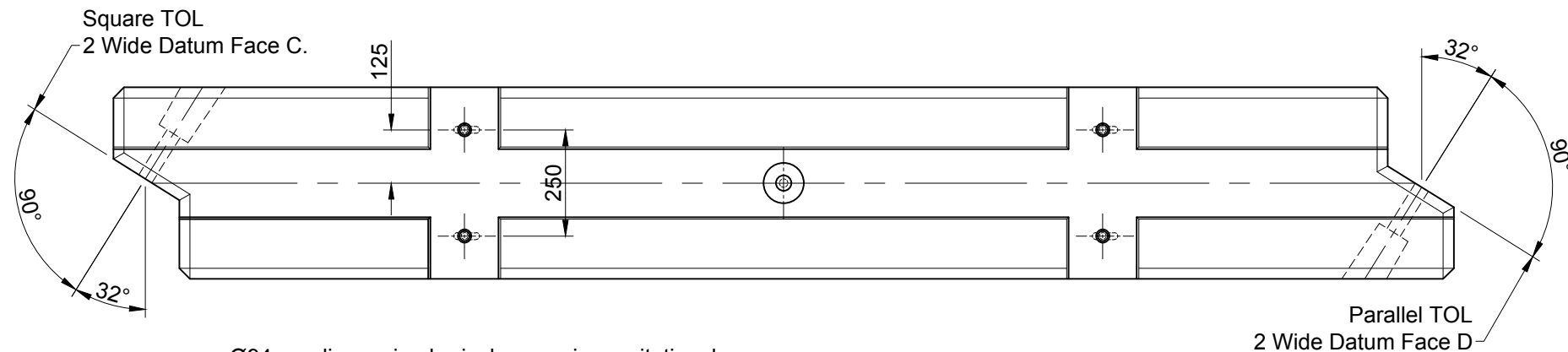
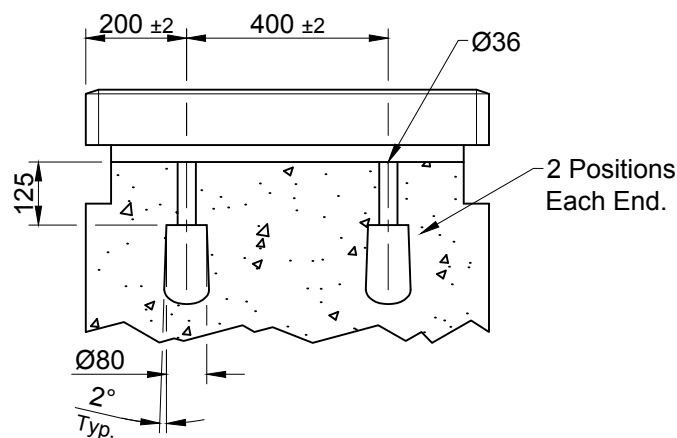
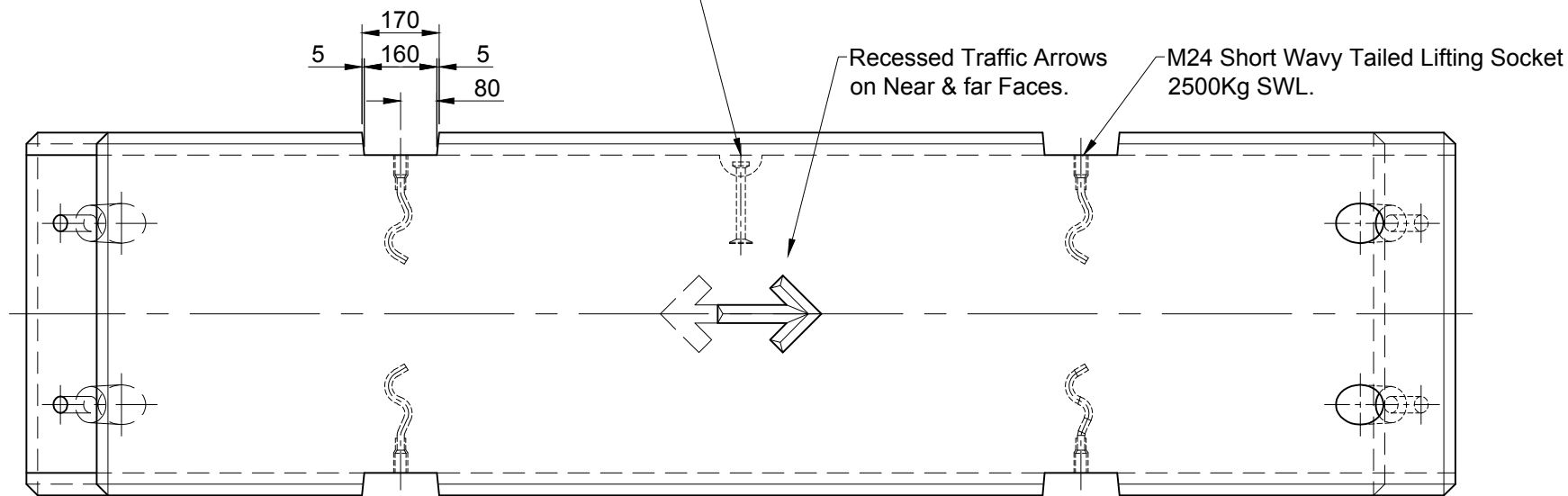


Notes

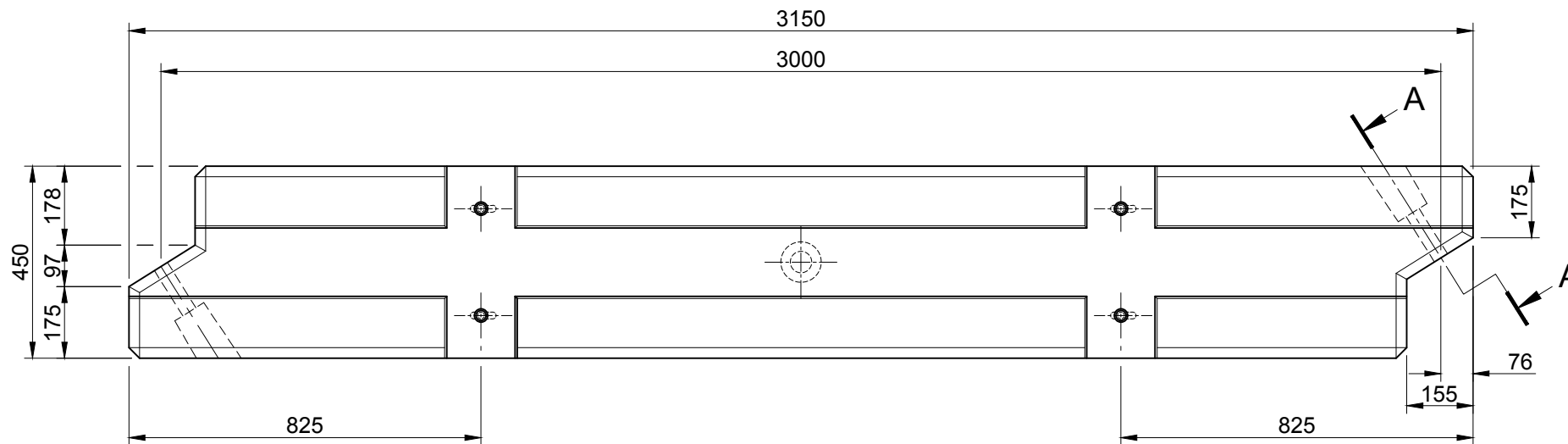
- Dimensions in millimetres
- Tolerance to be $\pm 0.5\%$ unless otherwise stated.
- For reinforcement details see drawing 150, 151 & 152.
- Concrete mix C50.
- The overlap of the scarf joint must always be in the direction of traffic.



Ø94mm dia semi-spherical recess in gravitational centre of block for pin anchor.
(pin anchor is rated to 5.0 tonnes with a safety factor of 3).



Part Section Arrow A - A
Detail Identical Both Ends



ALL Elite Precast Temporary Vertical Concrete Barriers (TVCB) are manufactured using high strength (50N/mm²) concrete

										TITLE Temporary Vertical Concrete Barrier (TVCB) Standard Unit (Sheet 1 of 3) Elite Product Code : V28				ELITE PRECAST CONCRETE LTD HALESFIELD 9, TELFORD SHROPSHIRE TF7 4QW											
REV	DATE	REASON FOR ISSUE	DRN	APP	REV	DATE	REASON FOR ISSUE	DRN	APP			DRN	CTC	CHKD	RMD	DATE	27-09-16	SIZE	A3	SCALE	1:15	DRG	EPC-TVCB-001	REV	O
					O	27.09.16	For Information.																		