

## Manhole Cover Slabs

Access hole sizes vary according to manhole diameter and depth. Elite's heavy-duty reinforced cover slabs can be supplied with a variety of standard and non-standard access hole sizes.

Designers and users should ensure that they have taken into account the current requirements for manhole access as detailed in the Health & Safety Code of Practice and other relevant requirements.



For more information on Elite quality concrete products  
phone 01952 588 885 or browse [www.eliteprecast.co.uk](http://www.eliteprecast.co.uk)

# Manhole Cover Slabs

## Slab types

Manhole Cover Slabs are manufactured to BS 5911-3 standard in the following diameters and access sizes...

### 900mm diameter

600mm x 600mm access

### 1050mm diameter

600mm x 600mm access

675mm x 675mm access

### 1200mm diameter

600mm x 600mm access

675mm x 675mm access

750mm x 600mm access

750mm x 750mm access

Lothian Seating Slabs are also available with the above access sizes.

## Manhole cover slabs

| Access | Depth | Weight |
|--------|-------|--------|
|--------|-------|--------|

### 900mm diameter

|             |       |       |
|-------------|-------|-------|
| 600 x 600mm | 150mm | 215kg |
|-------------|-------|-------|

### 1050mm diameter

|             |       |       |
|-------------|-------|-------|
| 600 x 600mm | 150mm | 305kg |
|-------------|-------|-------|

|             |       |       |
|-------------|-------|-------|
| 675 x 675mm | 150mm | 265kg |
|-------------|-------|-------|

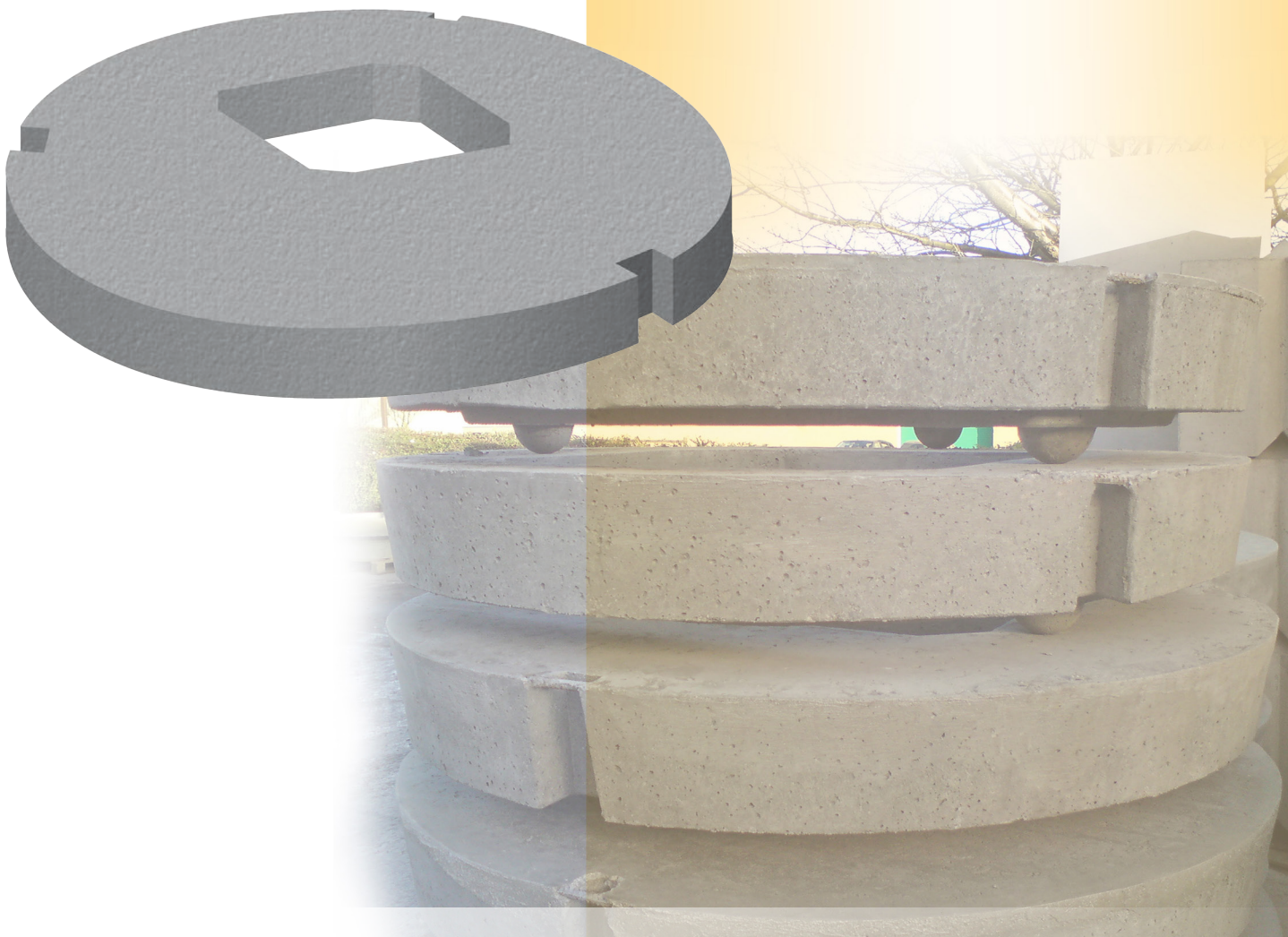
### 1200mm diameter

|             |       |       |
|-------------|-------|-------|
| 600 x 600mm | 150mm | 445kg |
|-------------|-------|-------|

|             |       |       |
|-------------|-------|-------|
| 675 x 675mm | 150mm | 405kg |
|-------------|-------|-------|

|             |       |       |
|-------------|-------|-------|
| 750 x 600mm | 150mm | 405kg |
|-------------|-------|-------|

|             |       |       |
|-------------|-------|-------|
| 750 x 750mm | 150mm | 365kg |
|-------------|-------|-------|



**ELITE**  
PRECAST CONCRETE

Elite Precast Concrete Limited  
Halesfield 9, Telford, Shropshire TF7 4QW  
Tel: 01952 588885 Fax: 01952 582011  
[www.eliteprecast.co.uk](http://www.eliteprecast.co.uk)