

1. Handling

Unit Volume / Weight

Unit Ref : **VRK-1220**
 Volume : **0.412 m³**
 Weight : **970 kg**

- Weight is based on 2,350 kg/m³
- Lifting system is by means of a 16mm dia. inverted 'V' hook using lifting chains or similar certified lifting system. Hook certified to : (LOLER 1998), (PUWER) 1998 (The spherical pin anchor is used for production purposes only).

IMPORTANT NOTE :

Prior to lifting older / pre-used blocks, check the lifting pin for wear / corrosion and check the block for cracks. If the block is cracked or the pin is worn, it could fail when lifting.

2. Concrete

- Characteristic 28 day cube strength = 50 N/mm² min.
- Concrete is Class A1 Fire Resistant in accordance with clause 4.3.4.4 of EN 13369

3. Manufacture

- Manufactured to : **BS EN 13369 : 2013**
- Tolerances to : **BS EN 13670 : 2009**

4. Physical & Chemical Properties

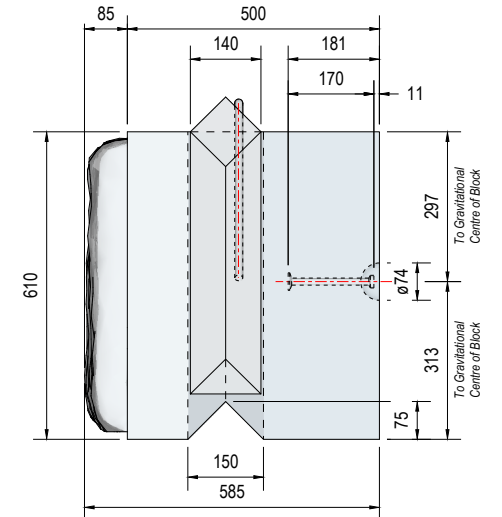
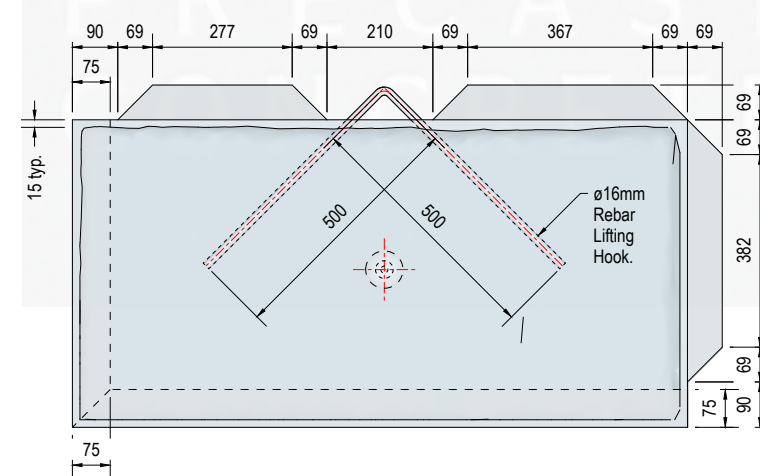
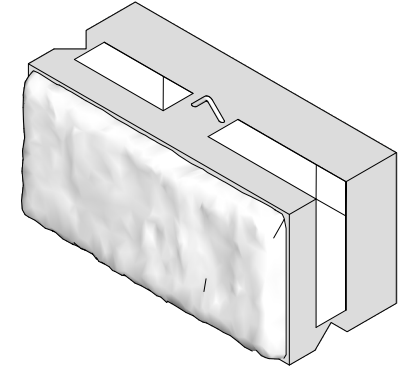
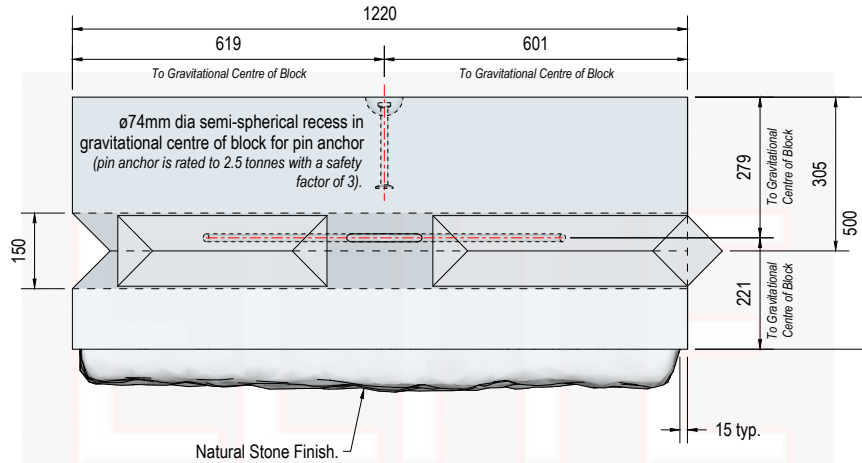
- Appearance : Grey in Colour
- Other Chemical Properties : Not Applicable

5. Design

- Design Life : **>100 years**

6. Manufacture Tolerances

- Length **±5mm**
- Width **±5mm**
- Height **±5mm**



O	22.06.23	First Issue.	CTC	RMD	
REV	DATE	REASON FOR ISSUE	DRN	APP	

TITLE					
Vee-Rock™ Interlocking Concrete Block					
1220mm x 585mm x 610mm Natural Stone Faced					
Elite Product Code : VRK-1220					
DRN	CTC	CHKD	RMD	DATE	22-06-23

ELITE PRECAST CONCRETE LTD					
HALESFIELD 9, TELFORD					
SHROPSHIRE TF7 4QW					
www.eliteprecast.co.uk					
SIZE	A4	SCALE	1:15	DRG	EPC-VRK-001
REV	O				